

Sectoral experience on data sharing

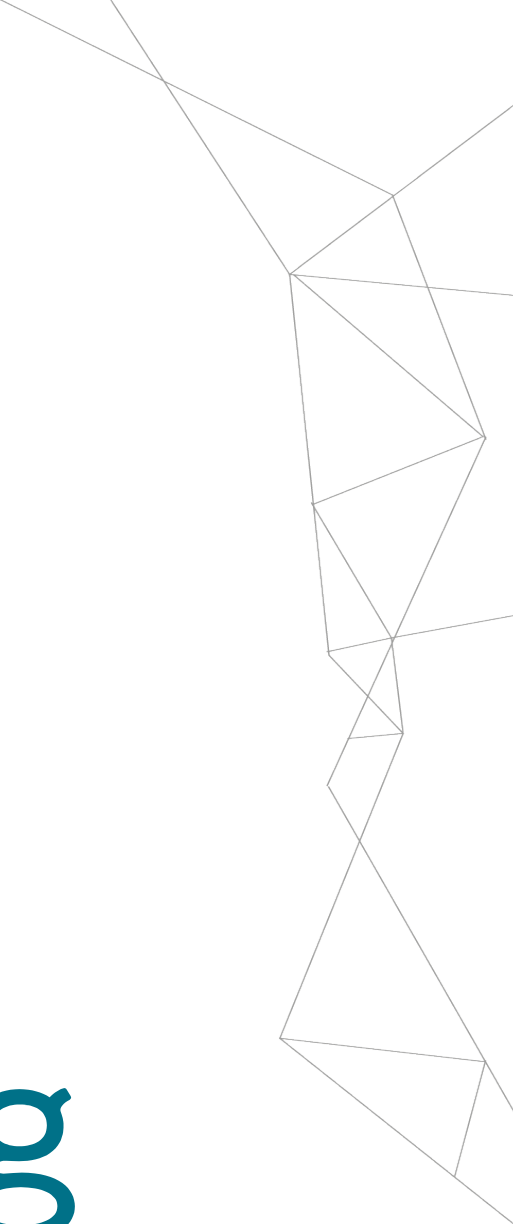
Energy: ESTFEED data exchange platform

BITS seminar:
Data sharing and re-use
Sectoral perspectives and common takeaways

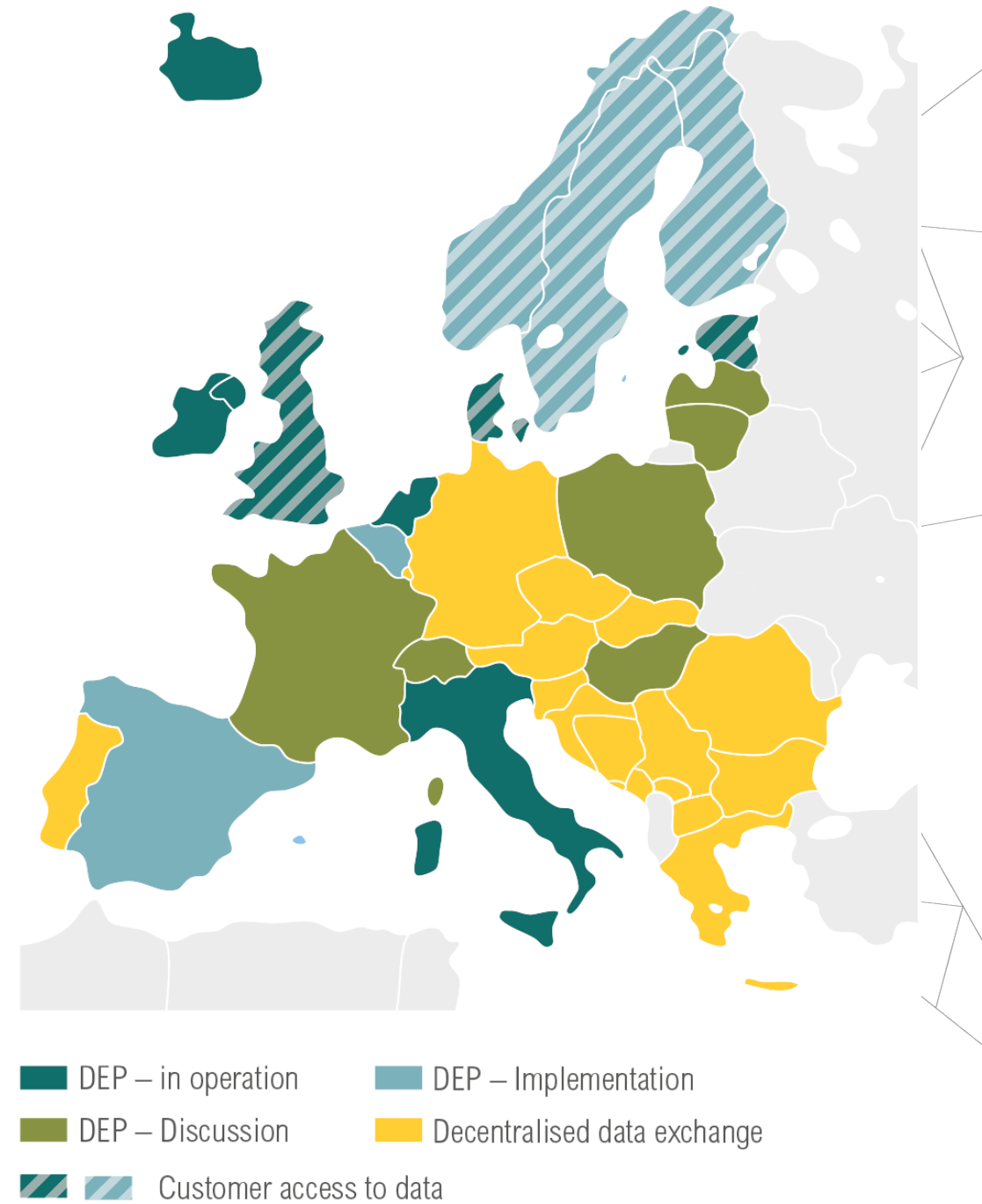
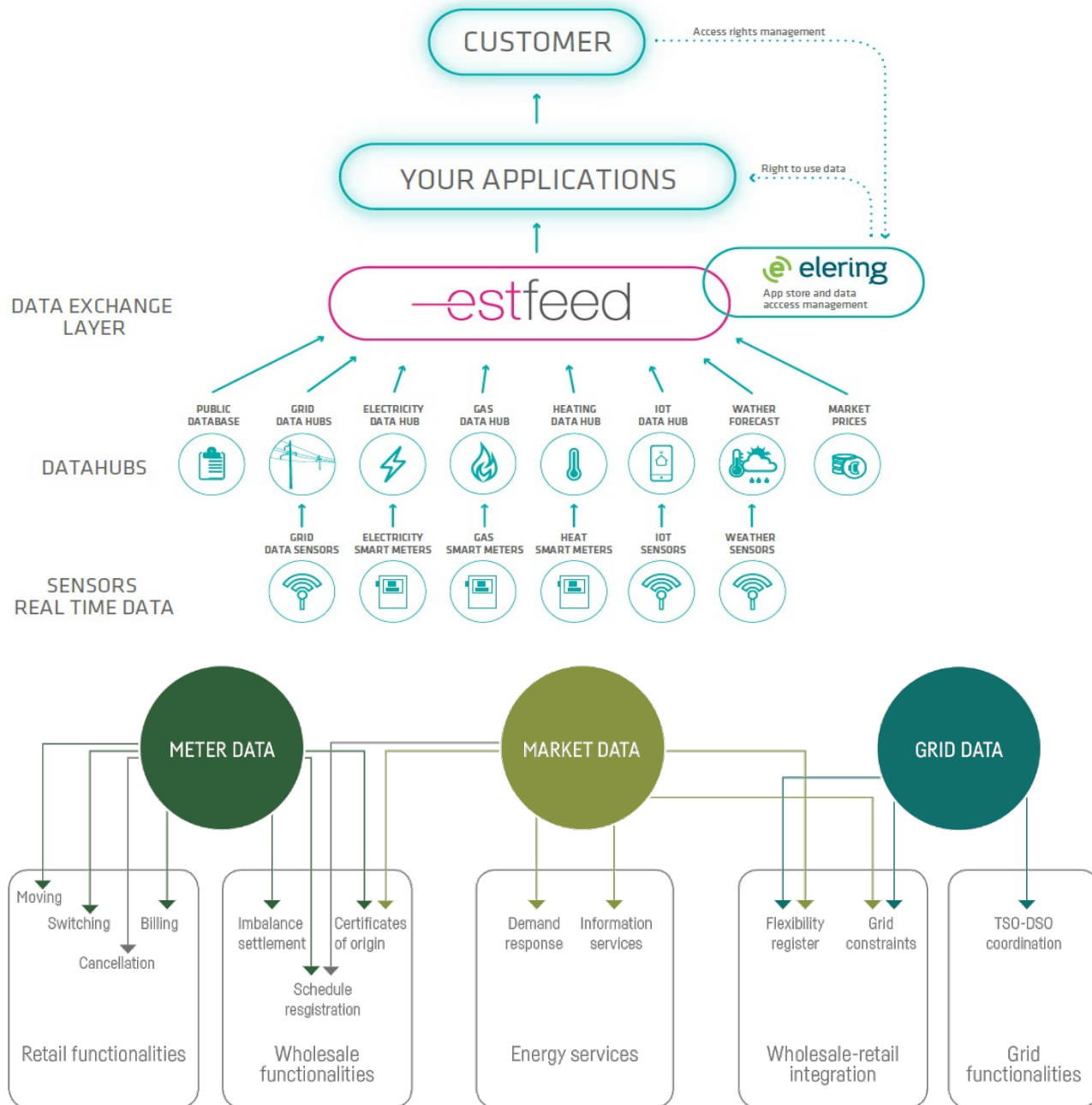
Kalle Kukk

Brussels, 3 October 2018

elering
GENERATING OPPORTUNITIES



DATA FLOWS AND ACCESS MANAGEMENT



Customer Empowerment through digitalisation: the story so far in Estonia

100% smart meters
(2013 – 2017)



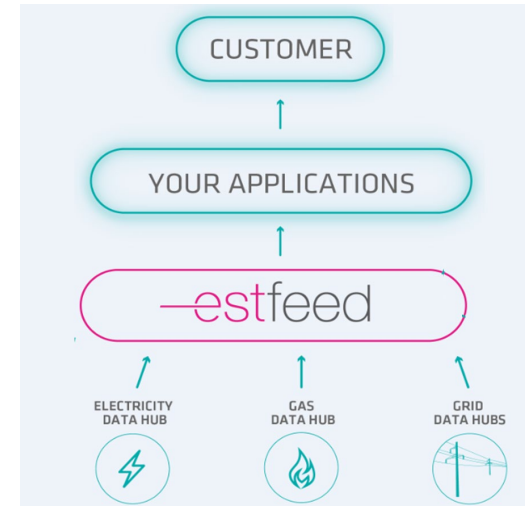
Landys-Gyr IDIS E450 PLC

Datahubs for electricity and gas
(2013, 2016)



Image from Wikimedia

Estfeed data access platform
(2017)



Flexibility,
efficiency,
optimisation
providers can
access smart
meter data via
Estfeed!

2013

2016

2017

38% households on hourly
varying spot prices – low prices
for consumers

Consumers in control of
their energy data



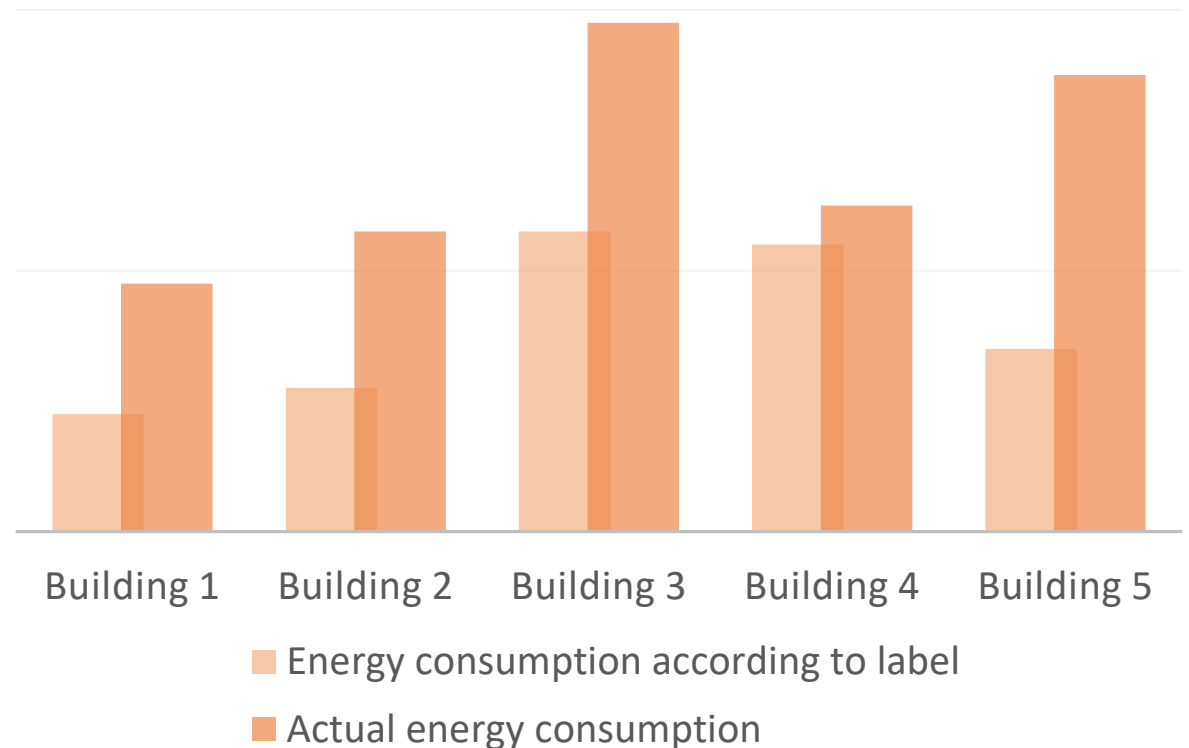
Example why data matters – energy labelling

In 95% of buildings the actual energy consumption is 2x what the energy label allows.

Consumers need accurate information to make informed choices.

Buildings consume 40% of final energy. Fixing labels will help energy and climate goals.

Actual energy consumption vs energy label
(illustrative, based on Tallinn heating data)



Legal and regulatory background for customer empowerment and data access

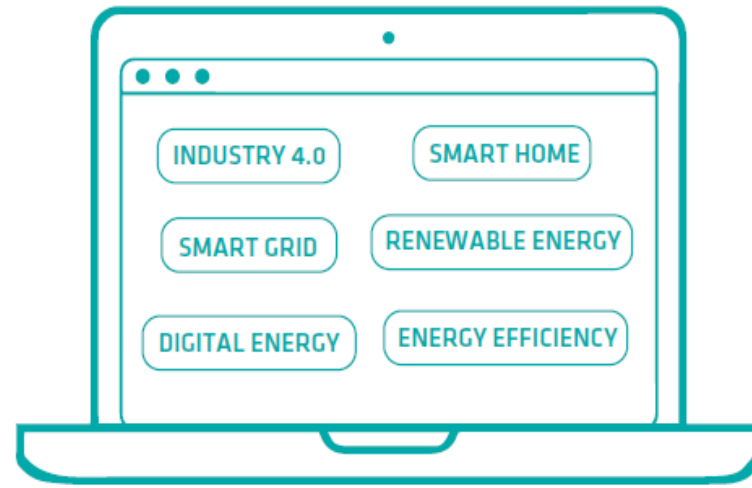
- **Clean Energy Package: consumers own their data**
 - Article 23 (Directive on common rules for the internal market in electricity):
 - » 1. Explicit consent by consumers to share data
 - » 2. Efficiently organised data access and exchange
 - Appendix II:
 - » Data accessible in near real time
- **GDPR: data privacy must be ensured**
 - Clarity about the purposes the data is being used for
 - Measures to ensure security, confidentiality, integrity, availability and resilience of processing systems

Legal and regulatory background for customer empowerment and data access

- **Clean Energy Package: consumers own their data**
 - Article 23 (Directive on common rules for the internal market in electricity):
 - ✓ >> 1. Explicit consent by consumers to share data
 - ✓ >> 2. Efficiently organised data access and exchange
 - Appendix II:
 - ✓ >> Data accessible in near real time
- **GDPR: data privacy must be ensured**
 - ✓ ○ Clarity about the purposes the data is being used for
 - ✓ ○ Measures to ensure security, confidentiality, integrity, availability and resilience of processing systems

Estfeed is the solution to all of these requirements

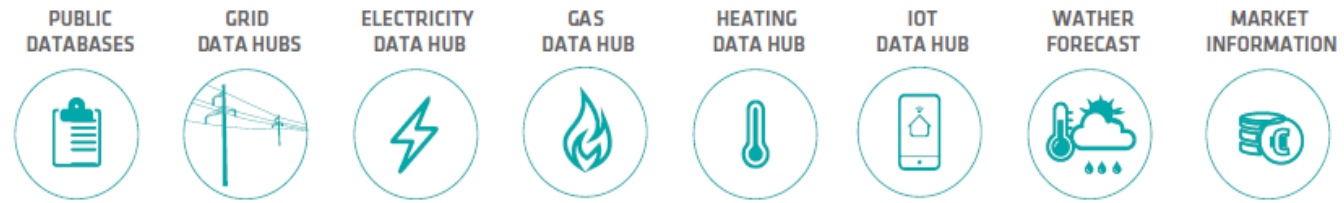
APPLICATIONS



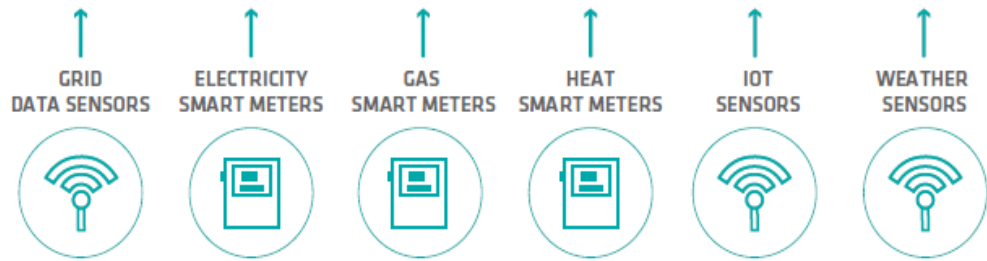
DATA EXCHANGE LAYER



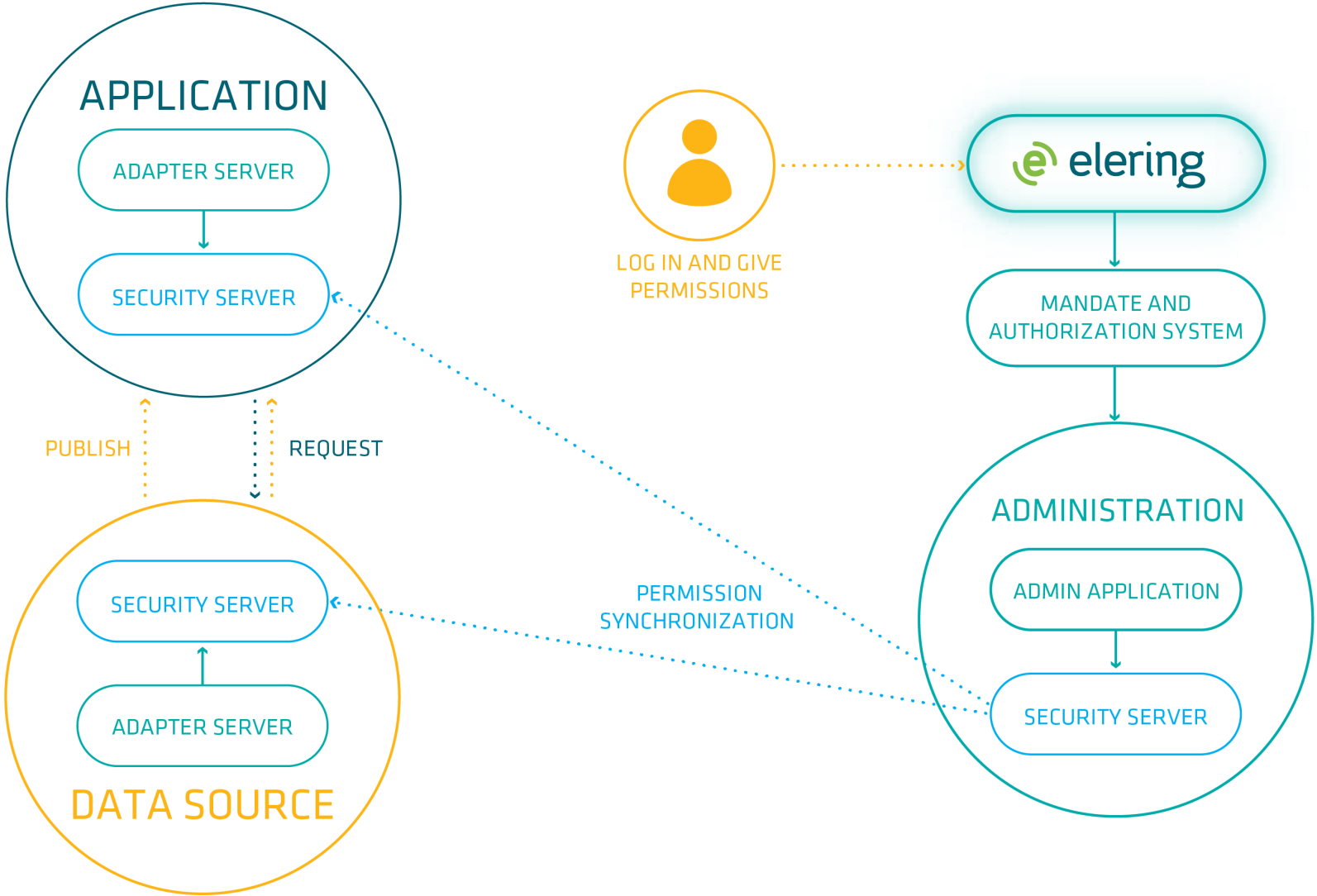
DATAHUBS



SENSORS
REAL TIME DATA



PEER TO PEER DATA TRANSMISSION ARCHITECTURE





 **Log In**

- Energy Consumption Data
- Data Usage History
- Data Sharing
- Representation Rights
- Contract Information

What is e-elering?

E-elering is a customer portal that holds all Elering e-services, as well as applications from other energy service providers and grants access to data related to your energy consumption.



You must be logged in to see your energy consumption data.



Energy Consumption Data



Data Usage History



Data Sharing



Representation Rights



Contract Information





EU-SysFlex stands for pan-European system with an **efficient coordinated use of flexibilities** for the integration of a large share of **renewable energy sources**.

eu-sysflex.com



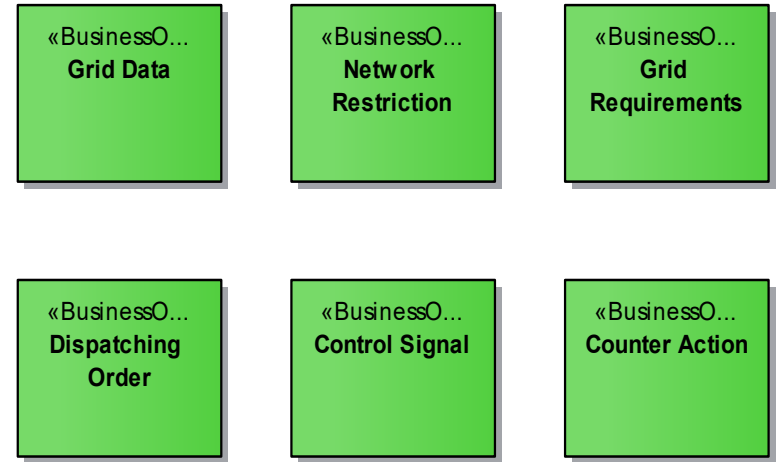
This project has received funding from the European Union's Horizon 2020 research and innovation programme under grant agreement No 773505.

Logical: Information Exchanged

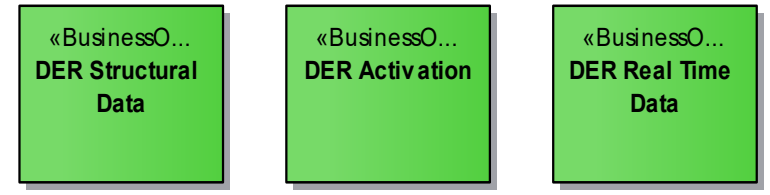
Flexibilities



Network Monitoring



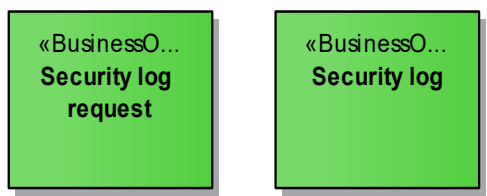
DER



Metering



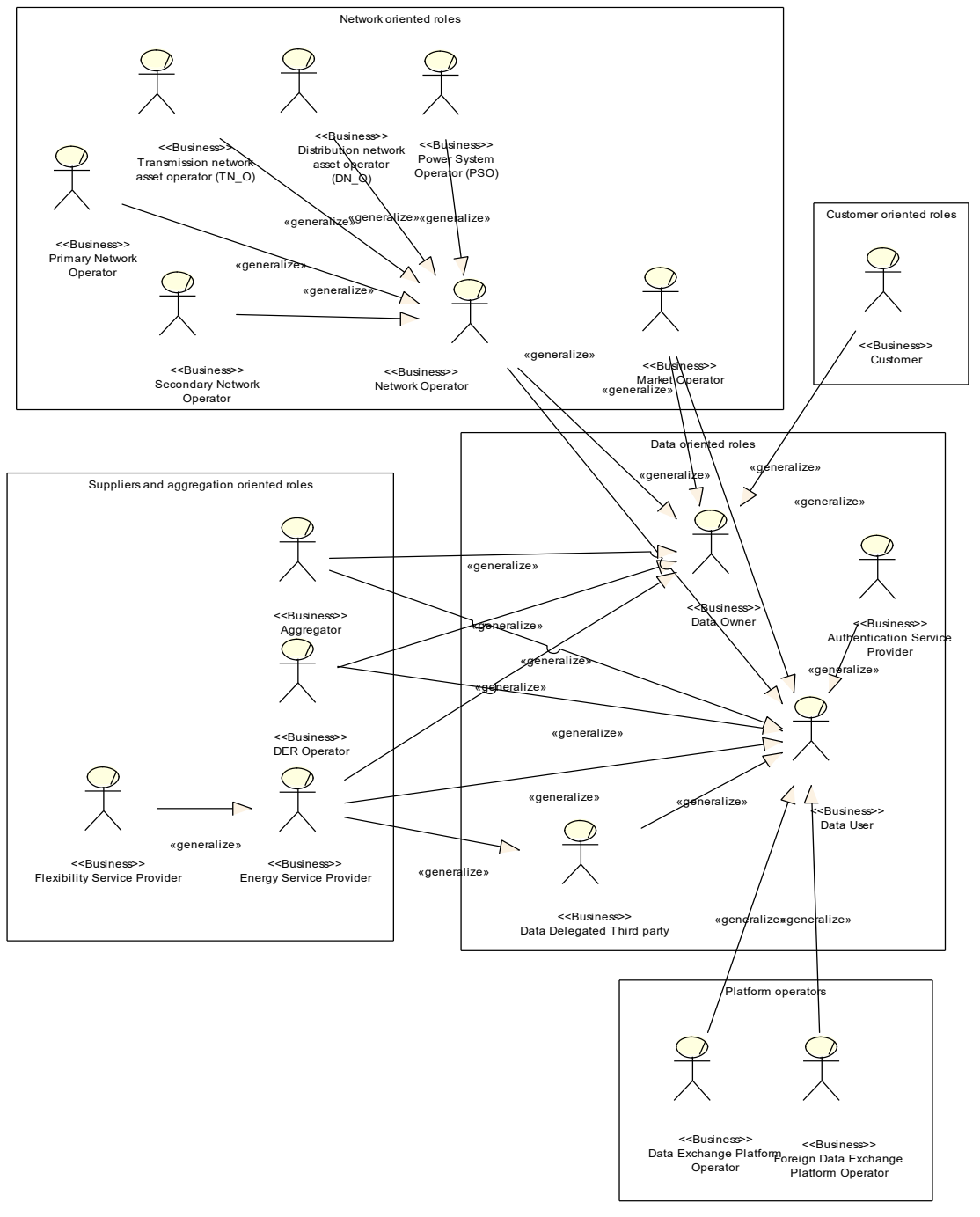
IT data



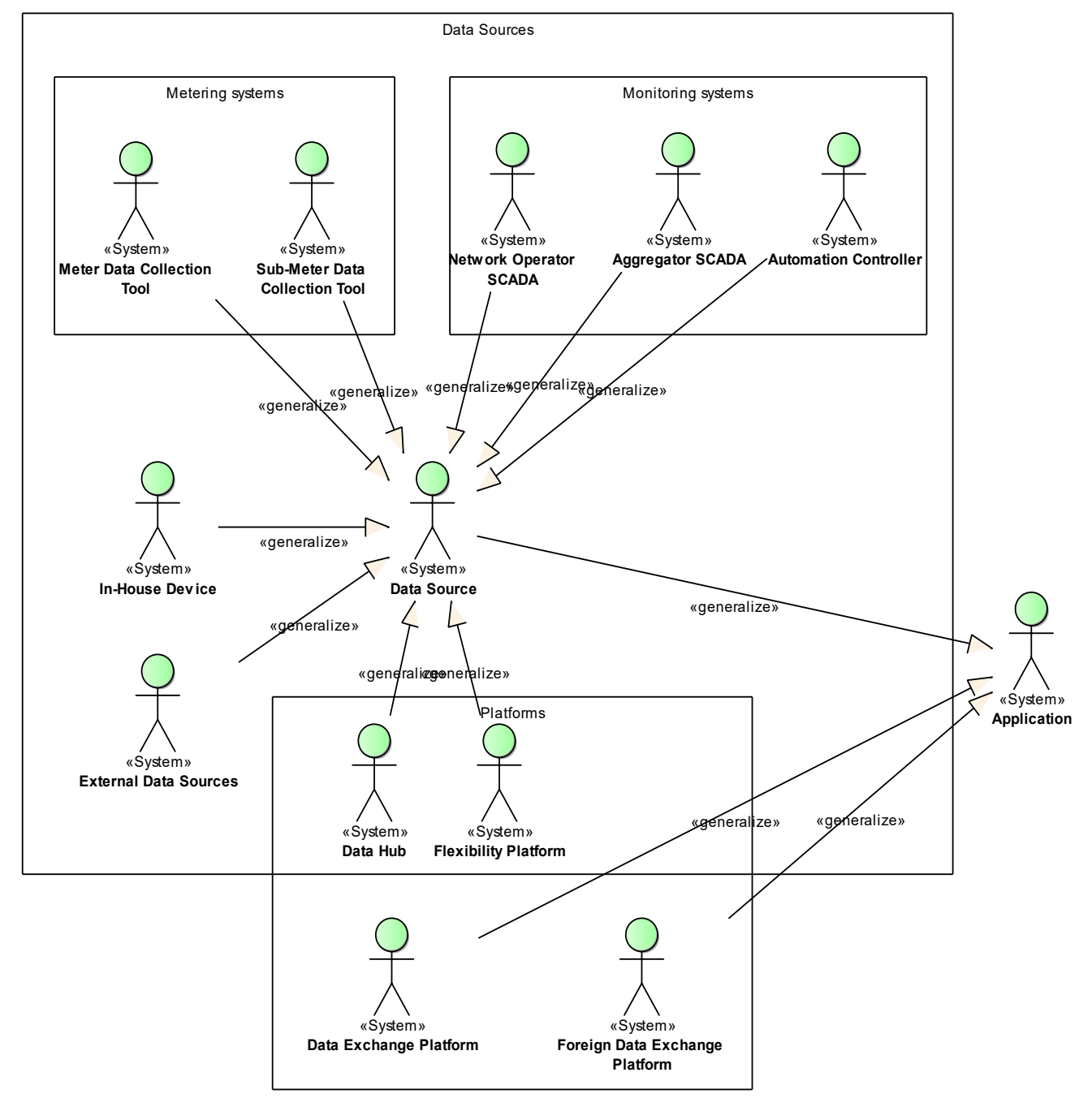
Customer and suppliers



Actor Overview: Business Roles



Actor Overview: System Roles



Thank you!

Kalle Kukk
kalle.kukk@elering.ee

elering
GENERATING OPPORTUNITIES